



RE-ACT Schools

Interreg
Euro-MED



Co-funded by
the European Union

RE-ACT SCHOOLS

**Transformation of Schoolyards to Combat Climate Change Effects
and Promote Healthy and Active Environments**

June 26th 2025
Thematic workshop:
Green infrastructure, biodiversity
and health for schools



RE-ACT Schools

Interreg
Euro-MED



Co-funded by
the European Union

RE-ACT SCHOOLS

**Transformation of Schoolyards to Combat Climate Change Effects
and Promote Healthy and Active Environments**

June 26th 2025
Thematic workshop:
Green infrastructure, biodiversity
and health for schools



ASF ITALIA PIEMONTE
Architettura Senza Frontiere

CORTILI IN AZIONE!

POSSIBLE SCHOOLYARDS' TRANSFORMATIONS



RE-ACT Schools

Interreg
Euro-MED



Co-funded by
the European Union



ASF PIEMONTE

ASF makes sustainable architecture that mean to ensure human rights: housing, citizenship, health, instruction.

We are an association that brings together different professional skills: for us, architecture is an inclusive and interdisciplinary process and we believe that theory must unite with practice with a work-study approach.

ASF has developed community-based and social architecture projects since 2006.

ASF is a member of international and national network Architecture sans Frontières.



RE-ACT Schools

Interreg
Euro-MED



Co-funded by
the European Union



SCHOOLYARDS: WHEN IT ALL STARTED...



ASF ITALIA - PIEMONTE
Architettura Senza Frontiere



RE-ACT Schools



Co-funded by
the European Union





GOALS

Bring out the Beauty



ASF ITALIA - PIEMONTE
Architettura Senza Frontiere



Improve
usability and
functionality



Develop the places
potential

Equipping for
outdoor education



RE-ACT Schools

Interreg
Euro-MED



Co-funded by
the European Union



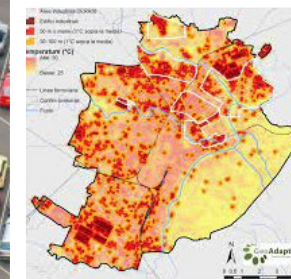


PROBLEMS TO RESPOND TO (in the long term)



Low Maintenance

Ground impermeability



Pollution

heat islands



RE-ACT Schools

Interreg
Euro-MED



Co-funded by
the European Union



ASF ITALIA • PIEMONTE
Architettura Senza Frontiere





ISSUES TO BE ANSWERED

LACK OF IDENTITY



ASF ITALIA • PIEMONTE
Architettura Senza Frontiere

● IS THIS A SCHOOL? ●



RE-ACT Schools

Interreg
Euro-MED



Co-funded by
the European Union



ASF ITALIA • PIEMONTE
Architettura Senza Frontiere

INFORMING AND ORIENTATING USERS



RE-ACT Schools

Interreg
Euro-MED



Co-funded by
the European Union





METHODOLOGY



INCLUSIVE DESIGN



GOALS

IMPROVING
OUTDOOR
SPACES

SCHOOLYARDS

SCHOOL
SQUARES



ASF ITALIA • PIEMONTE
Architettura Senza Frontiere



RE-ACT Schools

Interreg
Euro-MED



Co-funded by
the European Union





> The involvement of users is fundamental in order to arrive at a shared result, to increase the sense of belonging and to encourage care for the common good

> The participatory process is tailored to the needs of the context



Co-funded by
the European Union





THE PROTAGONISTS OF THE TRANSFORMATION

- > Students, teaching staff, school workers, families
- > Councillors, municipal offices in charge of school buildings and green areas
- > Local associations, neighbourhood committees, shopkeepers, inhabitants of the area



RE-ACT Schools

Interreg
Euro-MED



Co-funded by
the European Union



ASF ITALIA • PIEMONTE
Architettura Senza Frontiere

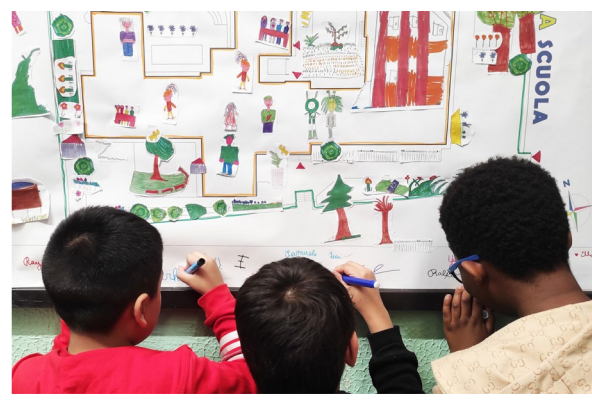
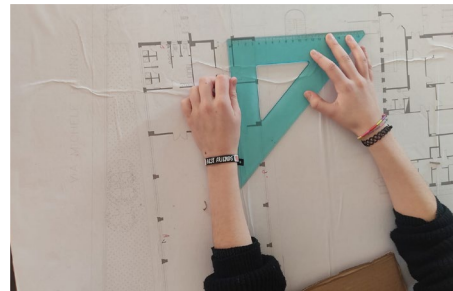




SIGHTS OF METHODOLOGY



ASF ITALIA • PIEMONTE
Architettura Senza Frontiere



**KNOWLEDGE OF
THE COURTYARD
SPACE AND
PLANTS**



RE-ACT Schools

Interreg
Euro-MED



Co-funded by
the European Union





Interreg
Euro-MED





ART WORKSHOPS



ASF ITALIA • PIEMONTE
Architettura Senza Frontiere



RE-ACT Schools

Interreg
Euro-MED



Co-funded by
the European Union



ASF ITALIA • PIEMONTE
Architettura Senza Frontiere

HORTICULTURE WORKSHOPS



RE-ACT Schools

Interreg
Euro-MED



Co-funded by
the European Union





ASF ITALIA • PIEMONTE
Architettura Senza Frontiere



TACTICAL URBANISM WORKSHOPS



RE-ACT Schools

Interreg
Euro-MED



Co-funded by
the European Union





ASF ITALIA • PIEMONTE
Architettura Senza Frontiere



PARTIES, EXHIBITIONS, INVOLVEMENT OF FAMILIES



RE-ACT Schools

Interreg
Euro-MED

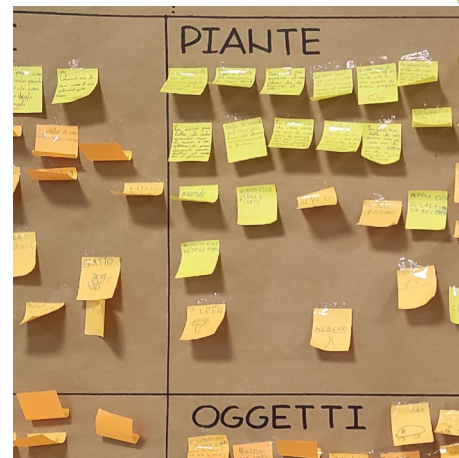


Co-funded by
the European Union





PARTICIPATORY DATA PHYSICALIZATION



ASF ITALIA • PIEMONTE
Architettura Senza Frontiere



RE-ACT Schools

Interreg
Euro-MED



Co-funded by
the European Union





ASF ITALIA - PIEMONTE
Architettura Senza Frontiere

SCHOOLYARDS: POSSIBLE TRANSFORMATIONS



RE-ACT Schools

Interreg
Euro-MED



Co-funded by
the European Union



ASF ITALIA • PIEMONTE
Architettura Senza Frontiere

Torino

Scuola sec. I grado Nosengo

Scuola primaria Albert Sabin

Scuola primaria Anna Frank

Nichelino

Scuola primaria Sangone

Scuola primaria Manzoni

Scuola primaria Walt Disney



RE-ACT Schools

Interreg
Euro-MED



Co-funded by
the European Union





PAVING

- > **Draining paving** for play made of stabilised, permeable earth, totally ecological, natural and recyclable
- > Useful for defining spaces, organising paths, and giving an **identity** to the courtyard



CASE STUDIES



RE-ACT Schools

Interreg
Euro-MED



Co-funded by
the European Union





PAVING

Scuola primaria Albert Sabin
2020 | Torino



ASF ITALIA - PIEMONTE
Architettura Senza Frontiere



BEFORE



AFTER



RE-ACT Schools

Interreg
Euro-MED



Co-funded by
the European Union







ASF ITALIA PIEMONTE
Architettura Senza Frontiere



RE-ACT Schools

Interreg
Euro-MED



Co-funded by
the European Union



DEPAVING

- > Increase in **permeable** surface area
- > Containment of the heat island
- > Increase in **vegetation**
- > Improvement in the **quality** of space
- > Improvement in people's well-being





DE PAVING

Scuola primaria W. Disney - 2024
Nichelino (TO)



ASF ITALIA • PIEMONTE
Architettura Senza Frontiere



BEFORE



AFTER



RE-ACT Schools

Interreg
Euro-MED

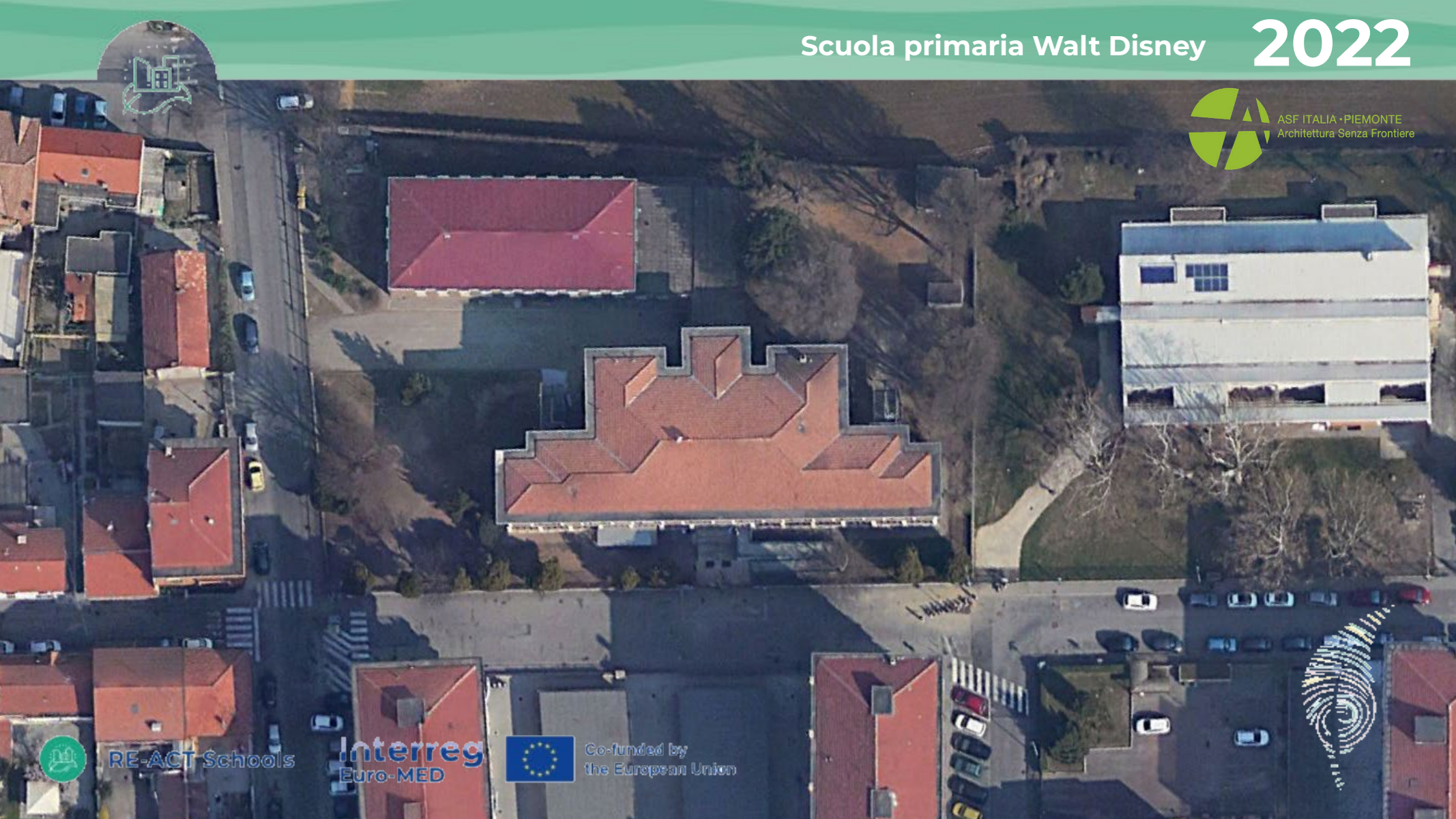


Co-funded by
the European Union





ASF ITALIA • PIEMONTE
Architettura Senza Frontiere



RE-ACT Schools

Interreg
Euro-MED



Co-funded by
the European Union





Scuola primaria Walt Disney

2024



ASF ITALIA • PIEMONTE
Architettura Senza Frontiere



RE-ACT Schools

Interreg
Euro-MED



Co-funded by
the European Union

Image © 2025 Airbus





DEPAVING

Scuola sec. di I° G. Nosengo - 2022
Torino



ASF ITALIA - PIEMONTE
Architettura Senza Frontiere



BEFORE



AFTER



RE-ACT Schools

Interreg
Euro-MED



Co-funded by
the European Union





ASTI ITALIA • PIEMONTE
Architettura Senza Frontiere



RE-ACT Schools

Interreg
Euro-MED



Co-funded by
the European Union





ASPI ITALIA - PIEMONTE
Architettura Senza Frontiere



RE-ACT Schools

Interreg
Euro-MED



Cofunded by
the European Union

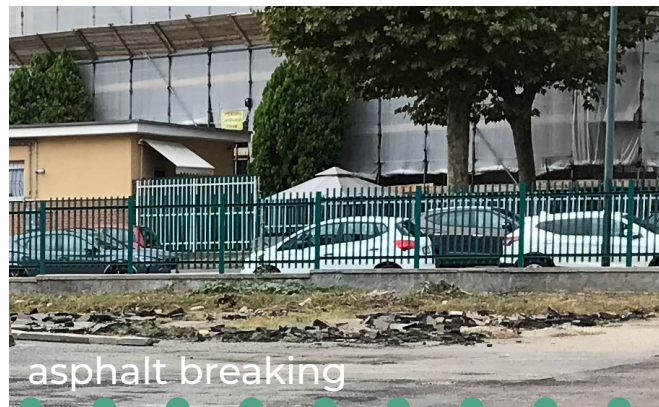




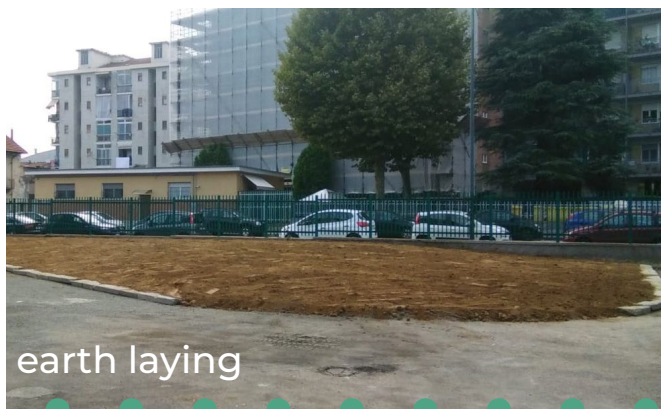
ASF ITALIA • PIEMONTE
Architettura Senza Frontiere



Initial status



asphalt breaking



earth laying



two months later



RE-ACT Schools

Interreg
Euro-MED



Co-funded by
the European Union





TACTICAL URBANISM

- > Method for the **redevelopment of open spaces**, collective art actions: the large areas of urban space are transformed into supports for a shared narrative, to regenerate spaces with small but meaningful interventions.
- > Generally **temporary** interventions, in view of a more structural redevelopment
- > Interventions to give a **signal**, to draw attention to an issue



RE-ACT Schools

Interreg
Euro-MED



Co-funded by
the European Union



Scuola sec. di 1° G. Nosengo - 2022
Torino

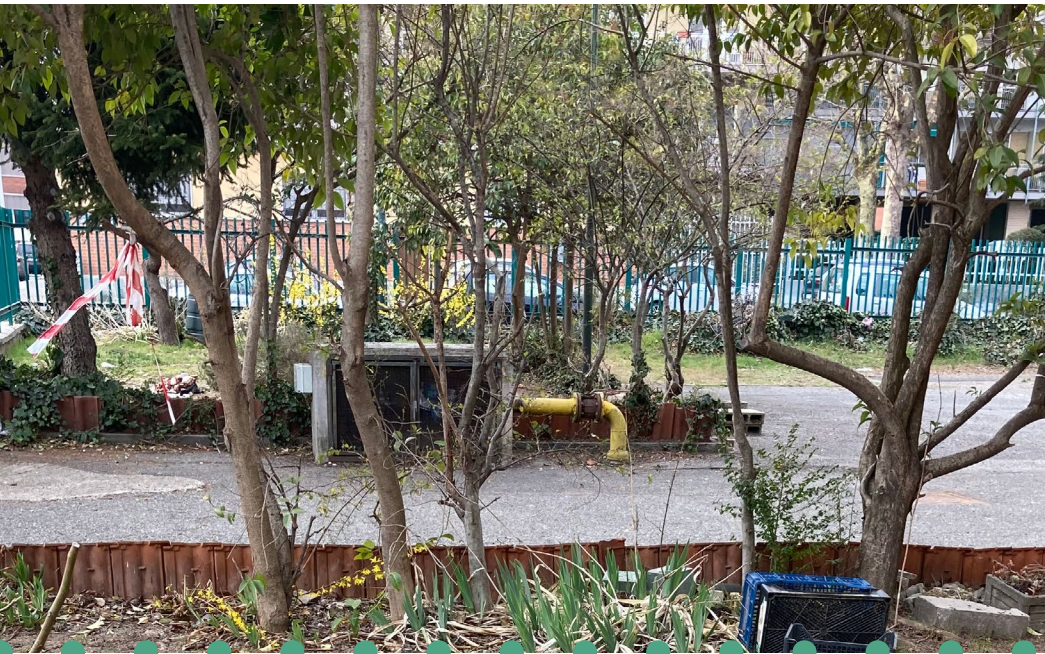


Scuola primaria W. Disney - 2023
Nichelino (TO)





TACTICAL URBANISM



BEFORE



AFTER



RE-ACT Schools

Interreg
Euro-MED



Co-funded by
the European Union





TACTICAL URBANISM



BEFORE



AFTER



RE-ACT Schools

Interreg
Euro-MED



Co-funded by
the European Union









TACTICAL URBANISM



BEFORE



AFTER



RE-ACT Schools

Interreg
Euro-MED



Co-funded by
the European Union





OUTDOOR CLASSROOM

> A space for outdoor lessons, as a place for learning in **continuity** with the classroom, offering new stimuli and allowing for the expansion and enhancement of the learning offer.

> Environmental psychology shows that **contact with nature** generates physiological responses that include muscle relaxation, lower blood pressure and stress hormone and, particularly in learning environments, increases attention and creativity.



Scuola primaria Sabin - 2023
Torino



Scuola primaria Sangone - 2023
Nichelino (TO)



RE-ACT Schools

Interreg
Euro-MED



Co-funded by
the European Union





DIDACTIC GARDEN

> **Immerse yourself in nature**, get your hands dirty, learn to observe and care for the earth: manual activities to experiment and develop new skills and attitudes, and discover the world of plants.

> The **benefits** of the didactic vegetable garden, demonstrated by various studies, are many, ranging from the prevention of unhealthy behaviour to therapy (horticulture reduces the possibility of experiencing depressive feelings, anxiety or stress).



Scuola primaria Sabin - 2022
Torino



Scuola primaria Manzoni - 2023
Nichelino (TO)



RE-ACT Schools

Interreg
Euro-MED



Co-funded by
the European Union





URBAN FURNITURE

> To make the courtyard **usable and comfortable**, it is essential to think of safe, made-to-measure furniture, from benches to litter bins.

> They can also be made **from waste** or recycled materials.



Scuola primaria Sabin - 2017
Torino



Scuola sec. I grado Nosengo - 2022
Torino



RE-ACT Schools

Interreg
Euro-MED



Co-funded by
the European Union





INCREASING GREENERY

- > Improvement of **air quality** and **temperature** on the small scale
- > Improvement in the **quality** of space
- > Improvement in people's well-being
- > Increasing **awareness**



RE-ACT Schools

Interreg
Euro-MED



Co-funded by
the European Union



Scuola sec. I grado
Nosengo - 2022
Torino



Scuola primaria
Disney - 2024
Torino



Scuola primaria Anna Frank - 2019
Torino

CASE STUDIES





ASF ITALIA - PIEMONTE
Architettura Senza Frontiere

**THE BEAUTY
AS A COMMON GOOD:
transforming a
place with available
resources, in harmony
with the environment,
creating identity for and
with citizenship**



RE-ACT Schools

Interreg
Euro-MED



Co-funded by
the European Union



CORTILI IN AZIONE!

POSSIBLE SCHOOLYARDS' TRANSFORMATIONS

Architettura Senza Frontiere Piemonte

Via Ottavio Assarotti 15, 10122, Torino

 info@asf-piemonte.org

 www.asf-piemonte.org

 [Architettura Senza Frontiere Piemonte](https://www.facebook.com/ArchitetturaSenzaFrontierePiemonte)

 [asf_piemonte](https://www.instagram.com/asf_piemonte)



RE-ACT Schools

Interreg
Euro-MED



Co-funded by
the European Union

